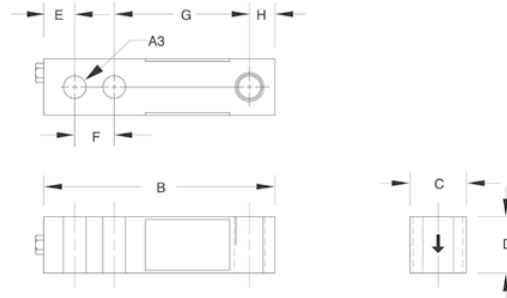


RL30002 Thru Hole Single-Ended Beam, Alloy Steel, NTEP 1:5000 III L Class III Multiple Cell, IP67



Picture is a representation of actual product



SPECIFICATIONS

<p>Full Scale Output: 3.0 mV/V</p> <p>Bridge Resistance: 350 ohms, nominal</p> <p>Material/Finish: High-alloy steel, nickel plated</p> <p>Temperature: Compensated range 14°F to 104°F/-10°C to 40°C</p> <p>Seal Type: Environmentally sealed, IP67</p>	<p>Safe Overload: 150% Full scale</p> <p>Safe Sideload: 100% Full scale</p> <p>Rated Excitation: 10V DC (15V maximum)</p> <p>Nonlinearity: 0.03% Full scale</p> <p>Hysteresis: 0.02% Full scale</p> <p>Insulation Resistance: 5000 megohms</p>	<p>Deflection at Capacity: 250-1000 lb = .013 in/.33 mm, 2000-3000 lb = .015 in/.38 mm, 4000-5000 lb = .025 in/.64 mm, 10,000 lb = .032 in/.81 mm, 15,000-20,000 lb = .038 in/.97 mm</p> <p>Cable Length: 20 ft/6.1 m</p> <p>Cable Diameter: 200 polyurethane jacket</p>	<p>Cable Color Code: Red + Excitation Black - Excitation Green + Signal White - Signal</p> <p>Warranty: Two-year limited warranty</p> <p>Approvals: except 250 lb</p>
--	--	---	--

DIMENSIONS

RATED CAPACITY	A3*	B	C	D	E	F	G	H
lb/inches								
250-5000 SE	.53	5.12	1.25	1.25	.62	1.00	3.00	.50
5000 LE-10,000	.78	6.75	1.50	1.50	.75	1.50	3.75	.75
15,000-20,000	1.03	8.75	2.00	2.00	1.00	2.00	4.75	1.00
kg/mm								
113.4-2268 SE	13.5	130.1	31.8	31.8	15.8	25.4	76.2	12.7
2268.0 LE-4535.9	19.8	171.5	38.1	38.1	19.1	38.1	95.3	19.1
6803.9-9071.9	26.2	222.3	50.8	50.8	25.4	50.8	120.7	25.4

* Dimension A1 is identical to A3 on the RL30002 Thru-Hole Model. † Dimension

ORDER INFORMATION

LOAD RATING	PART #	PRICE
RL30002 NTEP, Thru-Hole Design		
1000 lb (453.6 kg)	21521	Consult
2000 lb (907.2 kg)	21522	Consult
2500 lb (1134.0 kg)	21523	Consult
4000 lb (1814.4 kg)	21524	Consult
5000 lb SE (2268.0 kg)	21525	Consult
Conduit Adapter Kit* (must be factory installed to maintain warranty)		
3/8-24 Nipple	31533*	Consult
3/8-24 to 1/4-18NPT	31534*	Consult

INTERCHANGEABLE PRODUCTS

MANUFACTURER	MODEL	PAGE #
Threaded-Hole Design	—	—
VPG Tedeo-Huntleigh	3410	330
Artech®	30210	—

RICE LAKE WEIGHING SYSTEMS